

Site Environmental Analysis

- Residential
- Surrounding Schools
- School (to be demolished)
- Site boundary
- Underground Gas Line
- Underground Electricity Line
- Existing Vehicular Access
- Distant views in (potential overlooking)
- Visual Links (views out)
- Sources of noise
- Trees (root protection zones not noted)
- Sun Path
- Wind Path

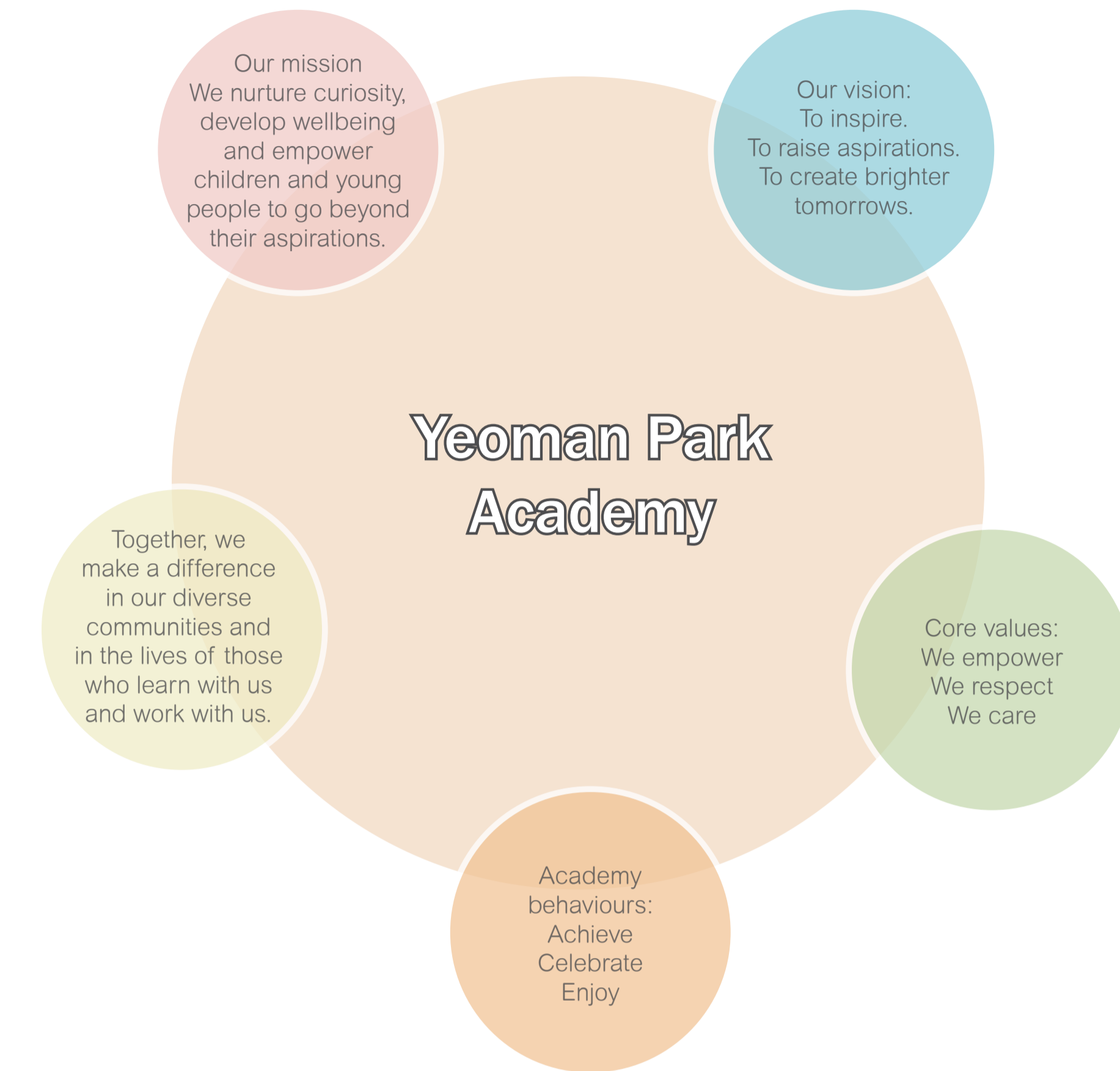
The building concept has been developed through several key drivers;

- All PMLD classrooms to have direct access from the classroom to a hygiene room.
- Therapy spaces to be distributed throughout the school to provide easy access for all key stage groups
- Central suite of practical rooms to provide shared facilities
- 6th form dining space is provided a separate facility linked to a life-skills room for flexibility.
- All ground floor classrooms should have direct access to outside play areas
- Library area are located centrally for ease of access by all pupils
- Separate entrances required for year groups, especially for Base & Lodge.

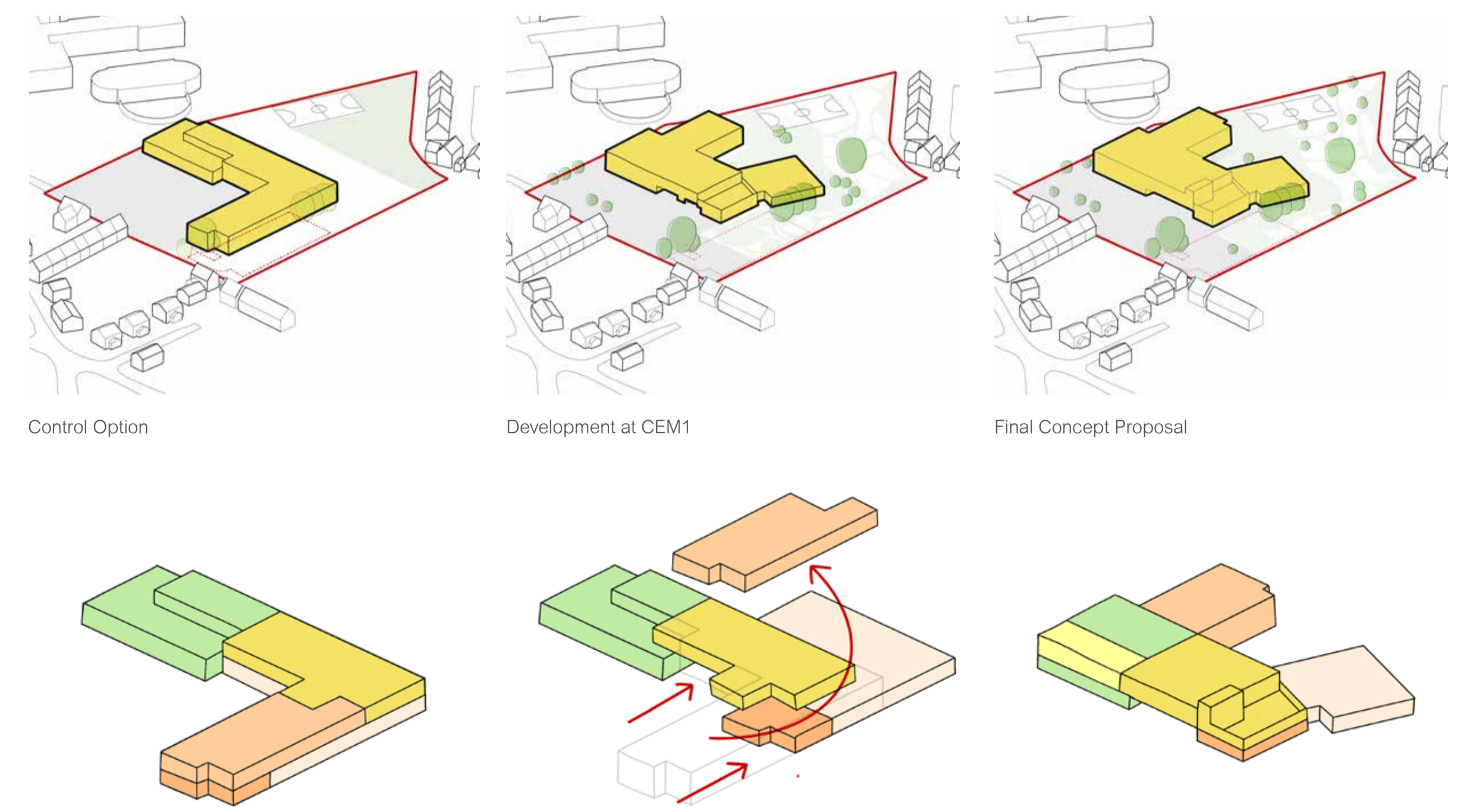
CURRICULUM VISION & ORGANISATION

At Yeoman Park Academy, we have developed an innovative and aspirational curriculum vision, with your input and guidance, the facility will allow us to:

- support the range of pupils' educational, therapeutic and medical needs
- cater for ambulant and non-ambulant pupils across a wide age range of 3-18
- provide specialist facilities to support extreme ASD behaviours
- provide an open plan and innovative PMLD learning experience
- provide academic, vocational, and practical-based opportunities that prepares learners for the real world
- support learning with a suite of additional therapy and work rooms, including hydrotherapy
- develop facilities to support being active and leading a healthy lifestyle, including the Yeoman Park run track and MUGA
- provide facilities for the wider SEND community, with facilities for after school and Saturday clubs



Building Form Development



Introduction

Yeoman Park
November 2022
Public Consultation





Birds Eye View From South - East Corner



Birds Eye View from East

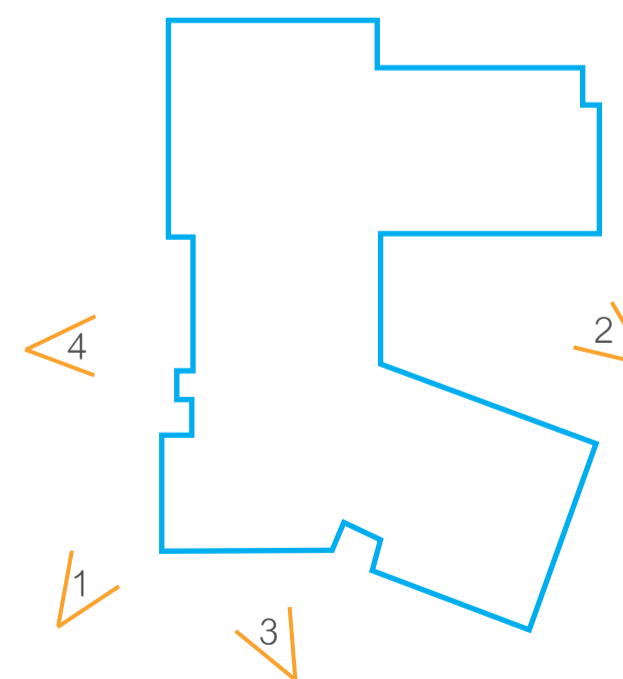


Main Entrance View From Car Park Area



Proposed Terrace View

Key



3D Views

Yeoman Park
November 2022
Public Consultation



Proposed North Elevation



Proposed East Elevation



Proposed South East Elevation



Proposed South Elevation

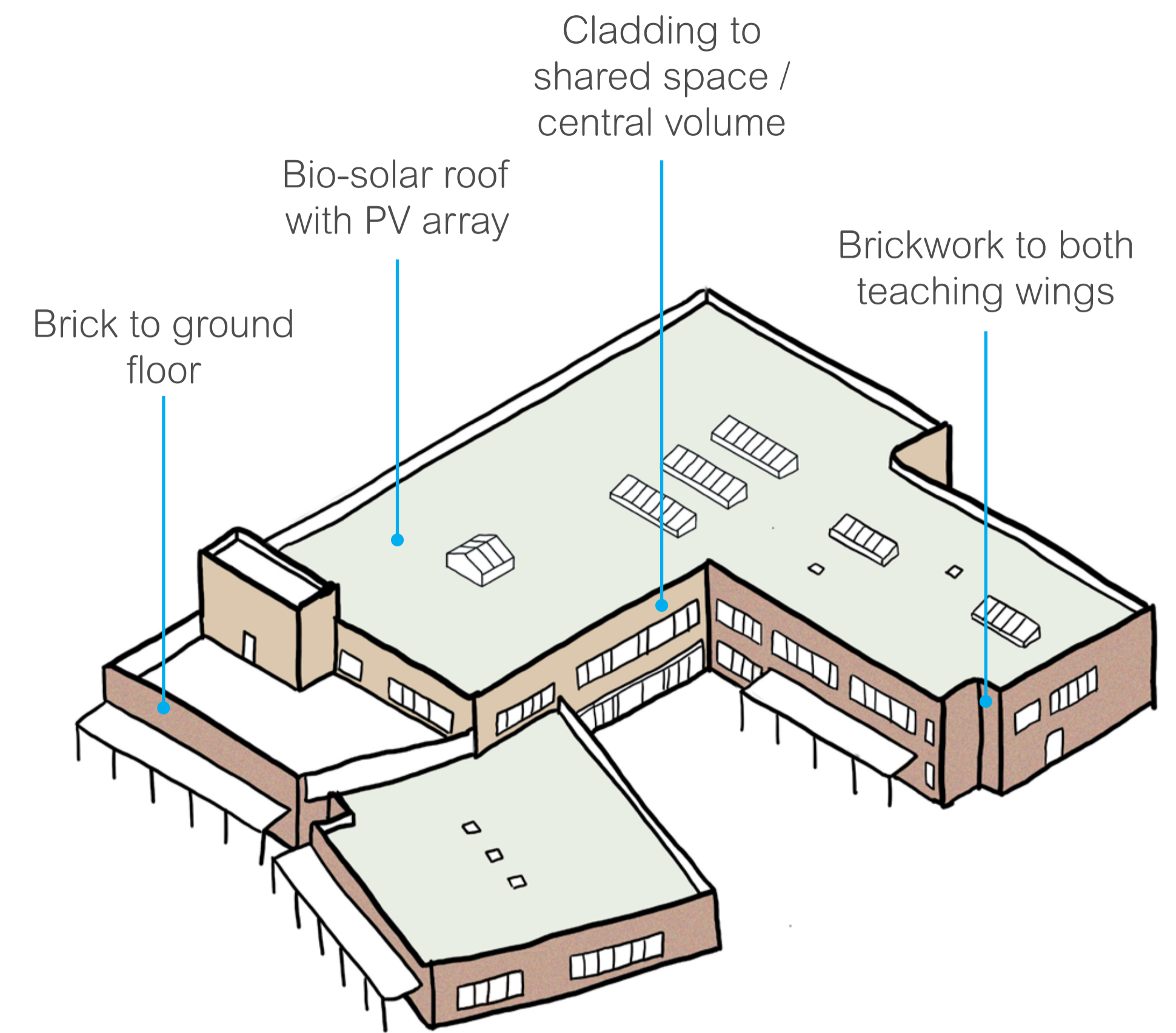


Proposed West Elevation - Main Entrance

Proposed Elevations

Yeoman Park
November 2022
Public Consultation





Building Material Strategy

Yeoman Park
November 2022
Public Consultation





View of Proposed Swimming Pool



View of Proposed Primary SEN Space



View of Proposed Dining Hall

Proposed Ground Floor Plan

Yeoman Park
November 2022
Public Consultation





- Large Spaces
- Staff & Administration Areas
- Basic Teaching Areas
- Storage
- Learning Resource Areas
- Circulation
- Non-Net Areas
- Community Use Secure Line
- Secure Line



View of Proposed Corridor



View of Proposed Sixth Form Social Area



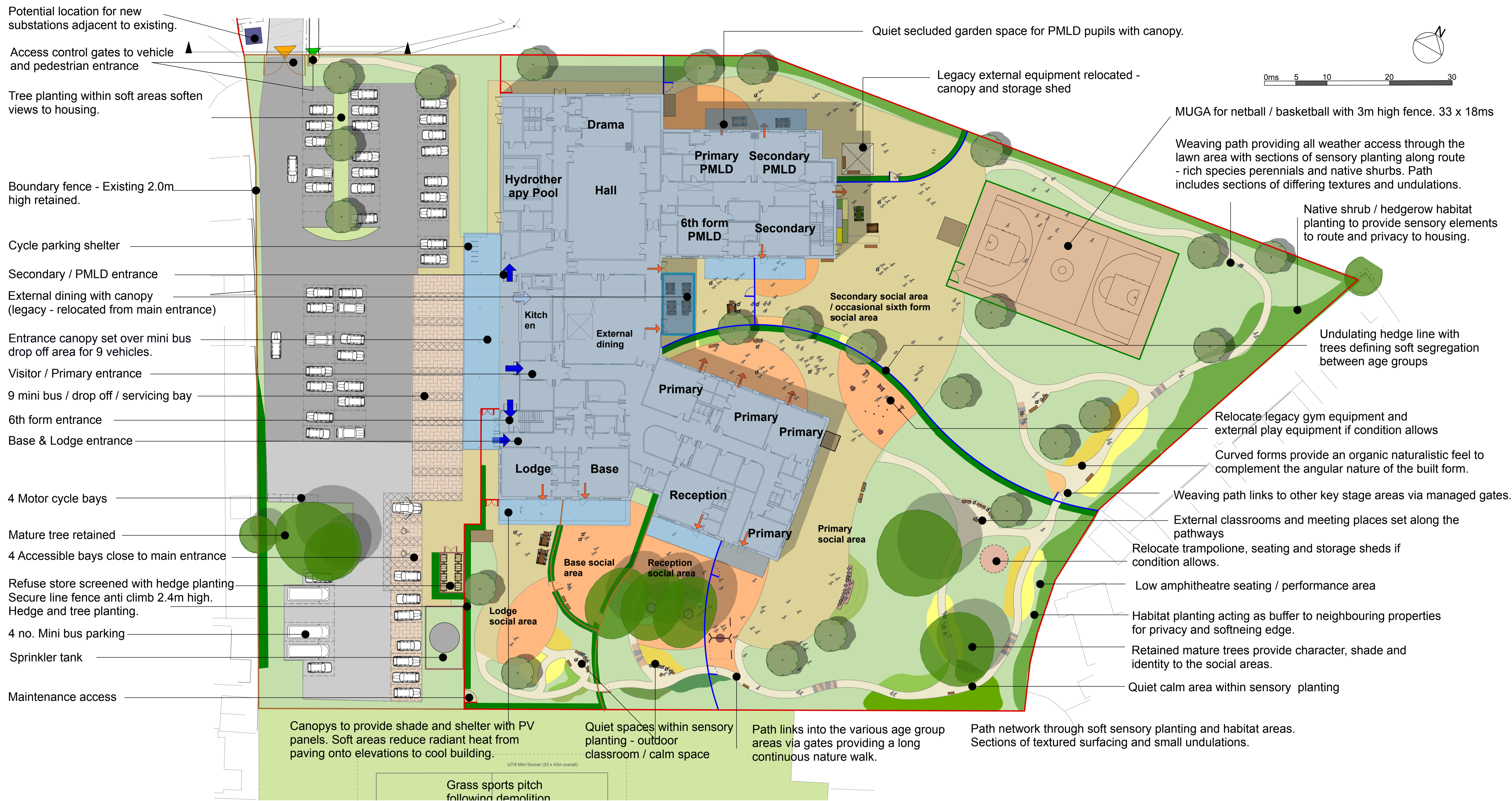
View of Proposed Staff/Sixth Form Terrace



Proposed First Floor Plan

Yeoman Park
November 2022
Public Consultation





Landscape Masterplan

Yeoman Park
November 2022
Public Consultation

